

GEOTUB PANEL® Assembly:



1



2



3



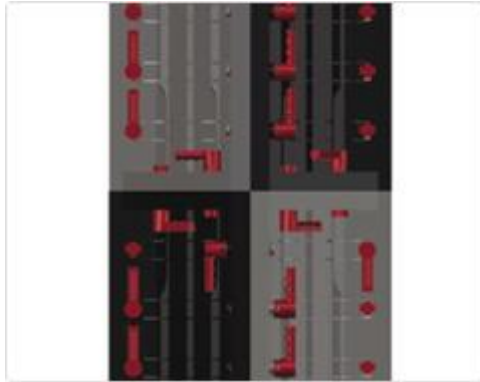
4

Join the 4 sides formed by Geotub® Panel;

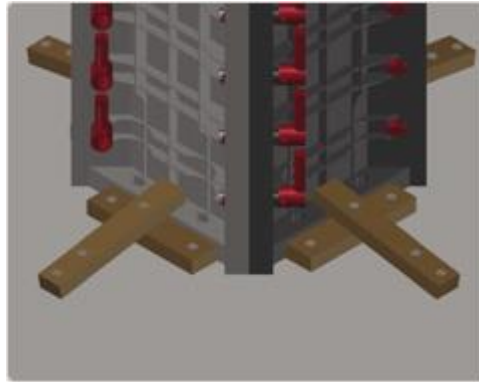
insert the high-strength nylon fixing handles from the bottom of the form up. Turn each handle by 90° to lock the parts;

the handles at each end of the part junction flange are turned by 90° inwards;

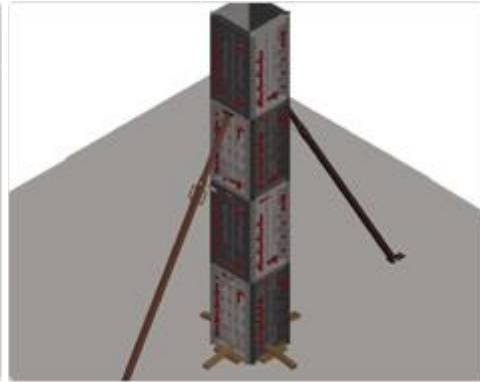
Continue coupling the Geotub® Panel modular elements, interlocking them vertically and horizontally, until the desired formwork height has been reached.



5



6



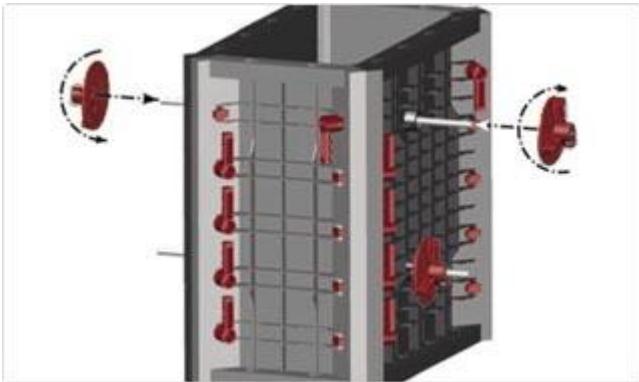
7

The handle grip is indifferently oriented upward or downward, preferably without overlapping any two of them. (fig. 5 shows the ideal handle position).

Once the Geotub® Panel column formwork is assembled, fix it to the ground with wood.

The plumb of Geotub® is easy and fast: two standard props are enough to stabilise the form.

GEOTUB® Panel ASSEMBLY:
Tie-rod holes on two faces



GEOTUB® Panel ASSEMBLY:
Tie-rod holes on all faces

